



Skookum
YACHT SERVICES

Present the
TCYC English Bay Scramble Weekend Regatta
English Bay Scramble
and Sunday Short Courses
August 10 and 11, 2019
Tiddly Cove Yacht Club

SAILING INSTRUCTIONS

1. RULES

- 1.1 The regatta will be governed by the rules as defined in [The Racing Rules of Sailing](#).
- 1.2 The regatta will be governed by the VARC Notice of Race 2019, portions of which are referenced within these Sailing Instructions for clarity.
- 1.3 **Class Rules**
 - 1.3.1 ORC Rating System Rules will apply to all boats racing under an ORC handicap.
 - 1.3.2 PHRF BC Rules will apply to all boats racing under a PHRF handicap. Boats that do not possess a PHRF BC rating certificate, or possess a rating

certificate from a ratings jurisdiction other than PHRF BC, will receive a club rating from the Club's handicapper.

1.3.3 Martin 242s shall race in PHRF configuration (including engines on). Martins will be scored as a single class on Saturday and will be joining Division 3 on Sunday under rules of PHRF BC.

1.4 Boats that intend to fly sails that display numbers other than her official sail number shall report those numbers to the race committee by email at fleetcaptaintcyc@gmail.com at or before 1300 hours Friday, August 9, 2019. Boats who fail to comply may be subject to protest by the race committee.

2. NOTICES TO COMPETITORS

Notices to competitors will be posted on the Tiddly Cove website at www.tiddlycove.bc.ca.

3. CHANGES TO SAILING INSTRUCTIONS

Any changes to the Sailing Instructions will be posted on the Tiddly Cove website (www.tiddlycove.bc.ca) no later than 2000 hours on the day prior to the race.

4. SIGNALS MADE ASHORE

Signals will not be made ashore.

5. COMMUNICATIONS

5.1 On each day of racing and prior to the warning signal, all boats must check in with the race committee on VHF 68 or in person, stating the following: Boat Name, Sail Number and Division, after which confirmation from the race committee must be obtained. Boats intending to race double-handed must indicate that intention during this communication.

5.2 Skippers are encouraged to monitor VHF 68, from 1045 hours onward. In the case of a wayward mark or any alteration to the finish line, race committee will broadcast information on VHF 68 in a timely fashion.

6. SCHEDULE OF RACES

6.1 The English Bay Scramble Weekend Regatta is a two day event consisting of two race days. Saturday will consist of a single long course race, the English Bay Scramble. Sunday will be short course racing.

6.2 The scheduled time of the warning signal for the first race each day is 1055 hours.

6.3 There will be no starts after 1500 hours on Sunday 11, August 2019.

7. CLASS FLAGS

7.1 Saturday Distance Race – the English Bay Scramble

The class flag for all boats is the VARC pennant.

7.2 Sunday Short Courses

7.2.1 Class flags will conform with section 3.2.1 of the VARC Notice of Race 2019.

8. RACING AREAS

Racing will take place in English Bay, west toward and encompassing the waters surrounding the Point Grey Bell Buoy to the South and Passage Island to the North.

9. THE COURSES

9.1 Saturday Distance Race – the English Bay Scramble

9.1.1 The four marks of Saturday's English Bay Scramble course are P, G, K, and N (see "SI 10 MARKS" below), as well as the start/finish line and its two pins (see "SI 12 START" and "SI 13 FINISH" below). Each boat must round as many of the listed marks as possible, in any order, taking them to either port or to starboard, but boats **must also cross the start/finish line after rounding any two marks, leaving the race committee signal vessel to starboard, before continuing to subsequent mark roundings**. Marks may only be rounded once. Boats may also cross the start/finish line in between any mark roundings, always leaving the race committee signal vessel to starboard, because a boat's most-recent crossing of the start/finish line will be recorded as a finish in the case of a shortened course (see "SI 9.1.5 Shortened Course" below) or in the event that the competitor's boat fails to round all four marks.

9.1.2 In the event that a mark has drifted a considerable distance from its original posted position boats are asked to round the GPS position stated in these instructions and report the wayward mark to race committee.

9.1.3 Boats must report the marks rounded and the order of roundings to the race committee via VHF channel 68 any time when crossing the Start/Finish lines after the start and immediately upon finishing racing for the day.

9.1.4 Example Course As an example, the boat that finished first overall last year sailed G-P-SF-K-N-SF or Point Grey Bell Buoy, Passage Island, through Start/Finish, Kits Barge Buoy, North Shore and through Start/Finish. See [Addendum A](#).

9.1.5 Shortened Course A boat may shorten her own course by crossing the finish line after rounding fewer than all of the marks. Having recorded a crossing this way, a boat may then continue racing in hopes of rounding additional marks. To record her improved finish, a boat must again cross the finish line after rounding the additional marks.

9.2 Sunday Short Courses

9.2.1 The diagrams and descriptions in [Addendum B](#) show the courses, the order in which marks are to be passed, and the side on which each mark is to be left.

9.2.2 No later than the warning signal for each race, the race committee signal boat will display the code flag, or letter placard corresponding to the course to be sailed. The race committee may announce the course on VHF channel 68, and verbally to boats within hailing distance.

9.2.3 Courses may be shortened as described in [Addendum B](#). This changes RRS 33.

10. MARKS

Mark N: North Shore, TCYC Orange Buoy Marker North of QB (49° 19.90' N, 123° 12.07' W)

Mark P: Passage Island (49° 20.78' N, 123° 18.40' W)

Mark G: Point Grey Bell Buoy. (49° 17.34' N , 123° 15.98' W)

Mark K: Kitsilano Barge Buoy (49° 16.97' N, 123° 09.86' W)

Marks 1, 2, and 3 for the Sunday short course races will be orange inflatable tetrahedrons or cylinders, however at the discretion of the race committee may be changed to the Kits Barge Buoy, QC, a freighter, or any other such mark the race committee deems appropriate.

10.1 In the event the race committee uses a substitute mark they will fly code flag L, come within hail, and describe any change in course and marks verbally, and on VHF channel 68.

10.2 Mark rounding direction in the English Bay Scramble distance race Saturday is at the competitor's discretion.

10.3 During Sunday's course racing, marks are to be rounded to port unless a green flag is displayed on the race committee signal vessel, in which case all marks are to be rounded to starboard.

- 10.4 Saturday Distance Race – the English Bay Scramble:** The starting and finishing marks will be an orange flag on the race committee signal vessel and orange flags on floating staffs.
- 10.5 Sunday Short Courses:** The starting marks will be an orange flag on the race committee signal vessel and an orange flag on a floating staff. The finishing marks will be an orange flag on the race committee signal vessel and a blue flag on a floating staff.

11. AREAS THAT ARE OBSTRUCTIONS

The following areas are designated as obstructions: A line extending from the northwest corner of the RCYC breakwater to the line beginning with the northwest corner of the RVCY Jericho breakwater, joining adjacent permanent red can buoys, and ending with the north end of the most westerly pier at Jericho Sailing Centre, shall be an obstruction. The Red marker buoys and the line both rank as obstructions. Boats sailing into the obstruction area shall be subject to protest and disqualification. DO NOT INDENT THE LINE.

12. THE START

- 12.1** Races will be started by using RRS 26 with the warning signal made five minutes before the start signal.
- 12.2** The start/finish line will be in the middle of English Bay (at approximately 49°18.00' N, 123°12.07' W). Depending on conditions the start area may be moved eastward for the Sunday Short Course Races.
- 12.3 Saturday Distance Race – the English Bay Scramble**

12.3.1 There will be one single start for all boats.

12.3.2 The start/finish line will extend from a staff displaying an orange flag on the race committee signal vessel out to two floating pins displaying orange flags approximately 180 degrees from each other in relation to the staff on the race committee signal vessel.

12.3.3 Either side of the start line may be used, but in every case a boat **must cross the start/finish line with the race committee signal vessel to starboard**. This applies both at the start **and during subsequent crossings including the final finish**. See [Addendum A](#).

12.3.4 A boat that is OCS at the start or otherwise failing to start properly after the start signal will have the option of restarting properly (still leaving a pin to port and the race committee signal vessel to starboard) or accepting a 10 percent time penalty. The race committee may attempt to notify OCS boats by radio (VHF Channel 68). Failure to do so will not be grounds for redress. This modifies RRS 62.1(a).

12.4 Sunday Short Courses

12.4.1 The starting line will be between an orange flag on the race committee signal vessel and an orange flag on a floating staff.

12.4.2 Boats whose warning signal has not been made shall avoid the starting area during the starting sequence for other divisions.

12.4.3 The start and finish lines shall not be crossed other than to start or to finish.

12.4.4 The race committee may attempt to notify OCS boats by radio (VHF Channel 68). Failure to do so will not be grounds for redress. This modifies RRS 62.1(a).

12.4.5 A boat starting later than 5 minutes after her starting signal will be scored Did Not Start without a hearing. This changes RRS A4 & A5.

13. THE FINISH

13.1 Saturday Distance Race – the English Bay Scramble:

13.1.1 The start/finish line is described in SI 12.2.2.

13.1.2 **To finish a boat must cross the start/finish line leaving the race committee signal vessel to starboard.** Every finish will be confirmed by a sound. Once again, **upon finishing racing for the day, all boats must report to the race committee the marks rounded and the order in which this was done.** A finish will be recorded based on a boats last recorded crossing.

13.2 Sunday Short Courses

13.2.1 The finish line will be between a staff displaying an orange flag on the race committee signal vessel and a floating staff displaying a blue flag on the pin end.

14. TIME LIMITS

14.1 Saturday Distance Race – the English Bay Scramble

No finishing times will be recorded after 1600 hours.

14.2 Sunday Short Course

14.2.1 Time limits for any division will be 90 minutes from the start of the race for that division. If one or more boats in a division finish within the time limit, the time limit for that division will be extended 30 minutes.

14.2.2 Boats failing to finish within time limit will be scored Did Not Finish without a hearing. This changes RRS 35, A4 & A5.

15. SCORING

15.1 Each day will be scored as a separate event and combined as a weekend event.

15.2 Saturday Distance Race – the English Bay Scramble

15.2.1 One race shall constitute a race day.

15.2.2 Within each division, boats that round more marks within the time limit will be placed ahead of those rounding fewer marks. Boats rounding the same number of marks as one another will be placed according to time-on-time corrected time consistent with the ratings and classifications specified in the VARC Notice of Race 2019.

15.2.3 Boats that wish to compete Double-Handed may do so as long as they report their intention during either registration or check-in. This race is included as a double-handed component of the TCYC Sailor of the Year Award.

15.2.4 For boats racing in the VARC Series, results for the English Bay Scramble will be scored separately as a Distance result.

15.3 Sunday Short Courses

15.3.1 One race is required to constitute a race day.

15.3.2 Boats racing under a PHRF handicap will be scored using the PHRF BC Time on Time formula.

15.3.2 Boats racing under an ORC Certificate will be calculated by Time on Time using the Triple Number scoring coefficient for one of the following three wind speed ranges:

Low Range (9 knots or less)

Medium Range (between 8 and 14 knots)

High Range (equal to or greater than 14 knots)

(a) The race committee will announce the Declared Wind Range that it plans to use for each race on VHF 68 prior to displaying the warning signal:

L = Low Range

M = Medium Range

H = High Range

15.4 For VARC scoring purposes, results for the Sunday Short Course racing will be scored as a VARC Regatta result.

15.5 TCYC English Bay Scramble Weekend Regatta (overall weekend scoring)

15.5.1 TCYC English Bay Scramble Weekend Regatta scoring is separate from VARC scoring.

15.5.2 Two (2) races are required to be completed to constitute a regatta. Regatta scoring will be a total of the score achieved in their division in the English Bay Scramble distance race plus the score of races sailed on the short course Sunday. Ties to be broken by overall Scramble finish place.

16. SAFETY REGULATIONS

16.1 All boats must comply with the Safety Requirements as set out in section 1.5 of the VARC Notice of Race 2019.

16.2 A boat that impedes or obstructs commercial traffic may be subject to disqualification. A boat that is the subject of five horns from commercial traffic will be protested by the race committee and be subject to disqualification.

16.3 Any boat that sails between a tug and its tow will be disqualified from the race.

16.4 Racers are reminded to use their good seamanship when deciding when and where they are crossing existing shipping lanes.

16.5 A boat that retires from the race shall notify the race committee as soon as possible.

17. PROTESTS AND REQUESTS FOR REDRESS

17.1 A Boat wishing to protest or request redress, in addition to any other requirement set out in the Racing Rules of Sailing, shall, after finishing and prior to the

warning signal for the next race, or if the incident giving rise to the protest occurred during the last race of the day, prior to the race committee signal vessel leaving the start area, notify the race committee, by radio on VHF 68 or by hailing the race committee, of its intent to request redress or protest and the names of the boat(s) it intends to protest, and receiving confirmation from the race committee that the race committee has received the boat's intent to protest. This notification will allow the race committee the opportunity to engage the protest committee in a timely manner following racing for the day. Failure to notify the race committee on the water is not grounds for invalidating an otherwise valid protest. This modifies RRS 61.

- 17.2** Protests must be must be delivered in person to the Fleet Captain of TCYC or his designate within two hours of the last finish of each day.
- 17.3** Parties involved in a protest will be notified by email and/or phone by the Fleet Captain of TCYC at or before the expiry of the protest time limit documented in SI 17.2.
- 17.4** Protests will be heard in the approximate order in which they were received, not earlier than 1830 hours or the expiry of the protest time limit documented in SI 17.2 whichever is later. This will allow parties and judges travel time to the hearing location: Saturday, Kitsilano Yacht Club; Sunday: False Creek Yacht Club.

18. DISCLAIMER OF LIABILITY

Competitors participate in the race entirely at their own risk. See RRS 4, Decision to Race. The organizing authority will not accept any liability for material damage or personal injury or death sustained in conjunction with or prior to, during, or after the race.

For further information contact:

Frank Rogers

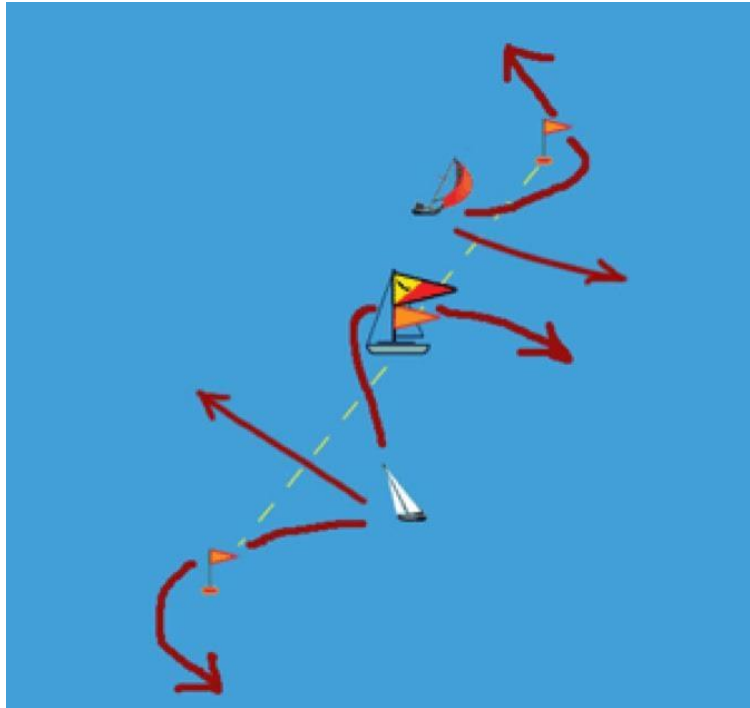
TCYC Fleet Captain

Email: rogers.frank@gmail.com

ADDENDUM A

English Bay Scramble Long Course

START and FINISH LINES

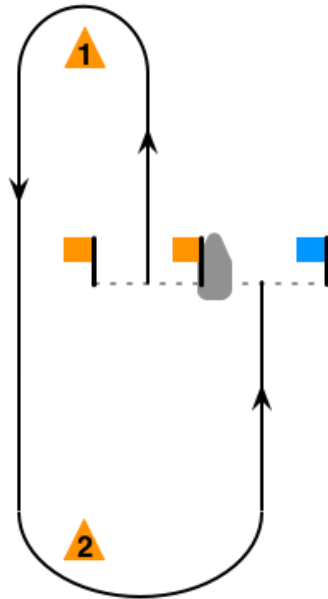
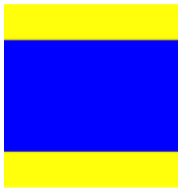


EXAMPLE COURSE



ADDENDUM B

Course Delta

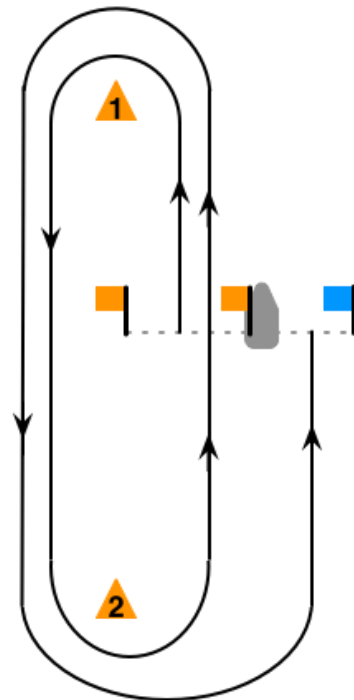


Start – 1 – 2 – Finish

Marks to port unless indicated by green flag on race committee signal vessel.

Do not cross the start or finish line on the downwind leg.

Course Echo

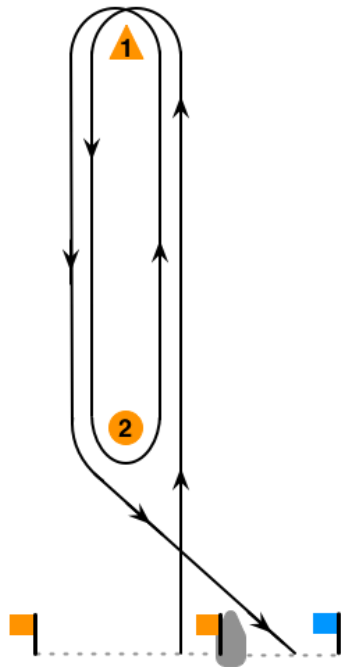


Start – 1 – 2 – 1 – 2 – Finish

Marks to port unless indicated by green flag on race committee signal vessel.

You must cross the start or finish line on upwind legs only. Do not cross the start or finish line on a downwind leg. Course may be shortened at start/finish line.

Course Foxtrot

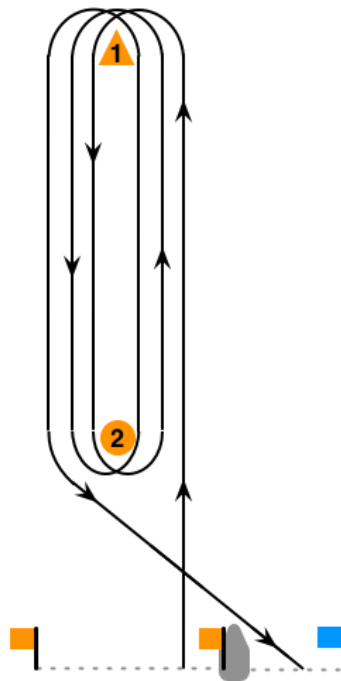


Start – 1 – 2 – 1 – Finish

Marks to port unless indicated by green flag on race committee signal vessel.

Course may be shortened between mark 2 and race committee signal vessel.

Course Foxtrot Echo

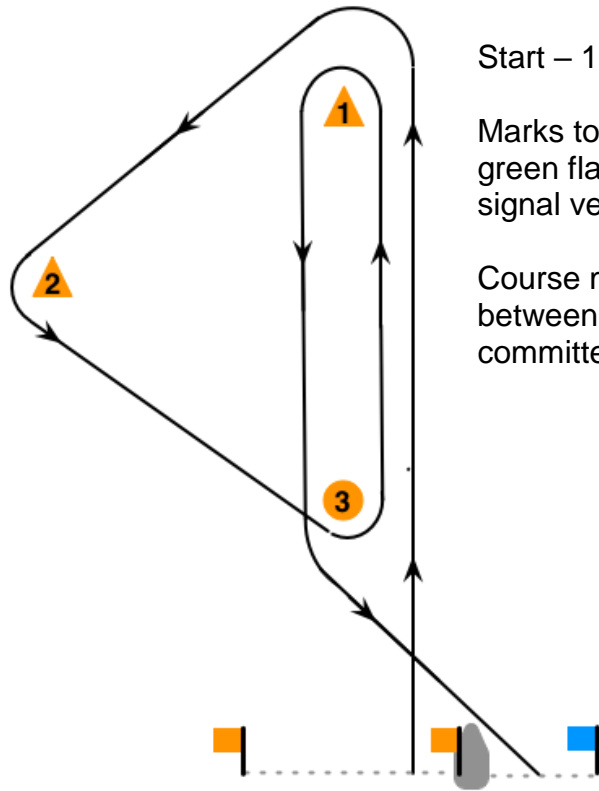
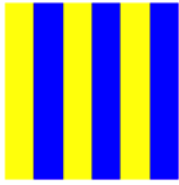


Start – 1 – 2 – 1 – 2 – 1 – Finish

Marks to port unless indicated by green flag on race committee signal vessel.

Course may be shortened between mark 2 and race committee signal vessel.

Course Golf



Start – 1 – 2 – 3 – 1 – Finish

Marks to port unless indicated by green flag on race committee signal vessel.

Course may be shortened between mark 3 and race committee signal vessel.

Our Sponsors



And Supported by



false creek yacht club

